



# SITEMANAGER 5

## Monitoring and Remote Control Rack

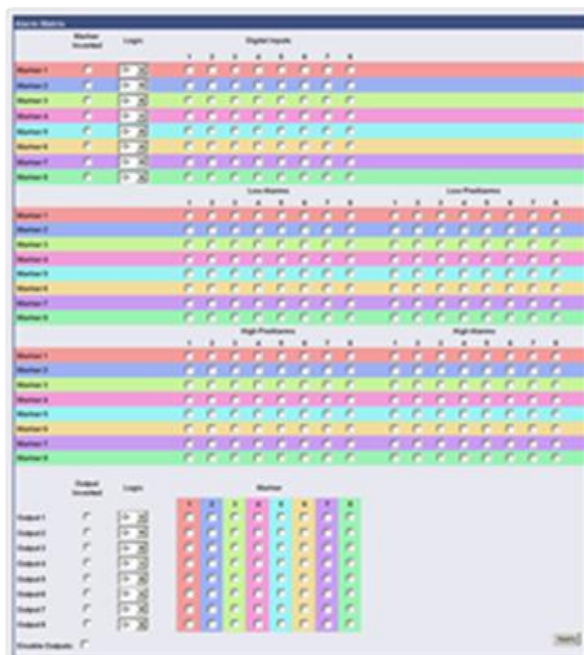
- **19" Remote Control Rack for rack and building monitoring**
- **Professional facility management device**
- **BACS Battery Management device**



## Description

• The SITEMANAGER 5 is a monitoring unit for the professional use in 19" racks. The SM5 can be used for monitoring both electronic equipment and rooms and is equally well suited for industrial monitoring purposes with the following functions:

- a) **8 digital inputs for contact indicators**,  
like smoke alarm, motion detector etc.
- b) **8 analog inputs**  
for temperature and humidity sensors etc.  
Every input is individually configurable.
- c) **8 relay outputs**  
The operator can manually or automatically control the configuration of the outlets
- d) **Event configuration thru AND/OR logic**  
The operator may define events out of a-c signals through a matrix



### e) UPS interface port

RS232 Port for UPS management, identical to CS121/141/BACS WEBMANAGER UPS management functionality

### f) 2 x RJ10 for BACS battery bus

Management of up to 330 BACS C-modules and up to 10 Currentsensors and 4 GX\_R\_AUX

• Using its simple plug 'n play connections for different sensors and actuators, identical to the GENEREX SENSORMANAGER. A quick and safe installation is guaranteed. The electrical connections are located at the rear side of the device (terminal strips).

• The state of the inputs are displayed via illuminating diodes (LED) at the front side, all details are visible on the inbuilt webinterface.

• The complete configuration and monitoring of the SITEMANAGER 5 is made through web-browser and UNMS software.

• In addition to the LAN connection, the SITEMANAGER 5 got an RS-232 interface for the connection to serial devices like an UPS. GENEREX supplies drivers for 90% of all UPS makers in today's markets.

• In comparison to the SITEMANAGER 4 the SITEMANAGER 5 is identical but adds BACS functionality.



## NEW: SITEMANAGER 5 includes BACS !

GENEREX's 3rd generation **BACS®** (Battery Analysis & Care System) is the most advanced product of its kind on the market today. An ethernet integrated battery monitoring and management system. BACS® uses web management technology to monitor the temperature, internal resistance, and voltage of every single battery in a given system and balances the potential difference of individual cells.

- Management of up to 330 BACS® C modules in up to 10 parallel strings.
- Integrated web server for status display configuration of all alarm thresholds (battery impedance, voltage, temperature, UPS alarms, environmental alarms, etc. network messaging system (email, SMS, SNMP, RCCMD, MODBUS and (optional) PROFIBUS, LONBUS, BACnet.

String 1						String 2						String 3						String 4					
No.	Volt [V]	Temp. [°C]	Ri [mΩ]	Equalize	Status	No.	Volt [V]	Temp. [°C]	Ri [mΩ]	Equalize	Status	No.	Volt [V]	Temp. [°C]	Ri [mΩ]	Equalize	Status	No.	Volt [V]	Temp. [°C]	Ri [mΩ]	Equalize	Status
1	13.68	26.8	24.24			1	13.68	27.5	26.03			1	13.68	27.0	26.76			1	13.70	28.4	27.74		
2	13.68	27.0	25.12			2	13.68	28.0	26.29			2	13.68	27.9	25.89			2	13.69	28.7	30.20		
3	13.68	26.5	24.24			3	13.68	26.6	23.34			3	13.68	28.5	23.65			3	13.69	27.5	30.89		
4	13.68	26.2	26.63			4	13.68	28.0	22.99			4	13.68	28.4	26.73			4	13.69	27.2	30.36		
5	13.68	27.0	23.20			5	13.68	27.2	25.42			5	13.68	27.4	23.70			5	13.69	28.1	43.65		
6	13.68	26.5	23.78			6	13.68	26.9	24.90			6	13.68	28.0	24.57			6	13.69	28.8	45.11		
7	13.68	26.6	26.32			7	13.68	28.0	26.22			7	13.68	27.8	24.96			7	13.69	28.2	48.80		
8	13.68	27.0	24.45			8	13.68	28.0	25.68			8	13.68	27.4	24.45			8	13.69	28.2	29.36		
9	13.68	27.0	26.53			9	13.68	26.0	24.71			9	13.69	27.5	24.85			9	13.69	27.9	29.59		
10	13.68	26.5	23.62			10	13.68	27.5	25.78			10	13.68	27.5	23.94			10	13.69	28.5	31.74		
11	13.68	26.5	23.92			11	13.68	26.8	25.87			11	13.69	27.6	24.33			11	13.69	29.1	30.20		
12	13.68	26.2	25.72			12	13.68	27.6	27.09			12	13.68	27.4	26.71			12	13.69	29.0	37.12		
13	13.68	27.0	25.05			13	13.68	27.6	25.66			13	13.69	27.3	22.84			13	13.69	28.5	39.50		
14	13.68	26.9	24.49			14	13.68	27.5	26.30			14	13.69	28.0	24.77			14	13.69	28.5	40.58		
15	13.68	26.5	24.83			15	13.68	27.5	23.16			15	13.69	27.5	25.16			15	13.69	28.5	49.34		
16	13.68	27.0	25.37			16	13.68	28.9	25.70			16	13.68	28.4	25.56			16	13.69	28.0	25.21		
17	13.68	27.0	24.79			17	13.68	27.5	24.95			17	13.68	28.5	23.47			17	13.69	28.6	29.43		
18	13.68	26.5	25.85			18	13.68	28.0	24.66			18	13.68	28.0	24.72			18	13.70	29.0	28.44		
19	13.68	27.0	23.84			19	13.68	28.0	23.46			19	13.68	27.5	25.69			19	13.69	28.2	26.74		
20	13.68	26.5	27.23			20	13.68	27.5	29.14			20	13.68	28.0	24.06			20	13.69	28.0	25.05		
21	13.68	27.0	24.85			21	13.68	28.7	22.80			21	13.69	26.5	25.12			21	13.70	27.6	28.13		
22	13.68	27.0	25.30			22	13.68	28.0	25.48			22	13.69	27.7	23.90			22	13.69	28.0	29.28		
23	13.68	25.7	23.04			23	13.68	27.0	25.64			23	13.68	27.1	23.99			23	13.70	27.9	29.59		
24	13.68	26.4	23.25			24	13.68	28.4	25.78			24	13.68	27.5	27.16			24	13.70	27.0	36.97		
25	13.68	25.6	24.04			25	13.68	27.1	25.21			25	13.68	28.6	24.28			25	13.70	28.5	27.21		
26	13.68	26.5	24.83			26	13.68	28.0	22.36			26	13.68	28.0	23.17			26	13.69	28.5	30.05		
27	13.68	27.5	25.42			27	13.68	28.6	25.30			27	13.68	28.0	24.71			27	13.70	29.5	28.59		
28	13.68	27.2	24.85			28	13.68	27.2	24.06			28	13.68	27.5	25.23			28	13.70	28.5	38.97		
29	13.68	26.5	24.20			29	13.68	28.5	22.54			29	13.68	28.0	25.59			29	13.70	28.0	29.36		
30	13.68	26.6	25.31			30	13.68	28.0	25.08			30	13.69	28.0	23.53			30	13.70	28.0	32.05		
31	13.68	26.6	25.35			31	13.68	27.2	25.65			31	13.68	28.0	23.17			31	13.70	27.5	30.74		
13.68 [V] Target Voltage						13.68 [V] Target Voltage						13.68 [V] Target Voltage						13.68 [V] Target Voltage					
0 [A] Current 0.00 [KW] Real Power						0 [A] Current 0.00 [KW] Real Power						0 [A] Current 0.00 [KW] Real Power						0 [A] Current 0.00 [KW] Real Power					

## Description

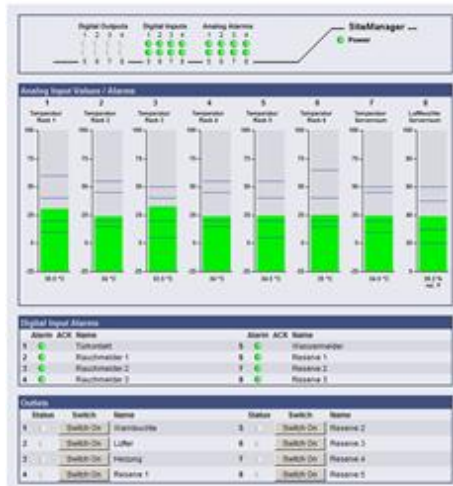
- The SITEMANAGER 5 supports the native RS232 UPS protocols of >1000 UPS devices!

UPS Status			
UPS Power Status			
Status	UPS STATUS OK		
UPS Model	EFFEKTA MI 600		
Input Voltage	L1: 226 V L2: 0 V L3: 0 V	Location	Hamburg
Input Frequency	L1: 50.0 Hz L2: 0.0 Hz L3: 0.0 Hz	Seconds on Battery	0
Output Voltage	231 V	Battery Voltage	14.00 V
Output Frequency	N/A	Battery Capacity	100.0 %
Load	L1: 0 % L2: 0 % L3: 0 %	Autonomy Time	0.22 minutes
		Battery Temperature	35.0
Load in percent			
0.0 %			
Battery Capacity			
100.0 %			

Predaj v SR: Rhea elektro s.r.o., Elektrárenská 1/12440, 831 04 Bratislava, tel.: + 421 2 49101914-18, info@rhea-elektro.sk



- The **SITEMANAGER 5** is able to co-administrate almost every UPS device, including all of their state and measurement values of environmental sensors of any vendor.



## SITEMANAGER 5 Status Display

Colored illuminating diodes for the state display

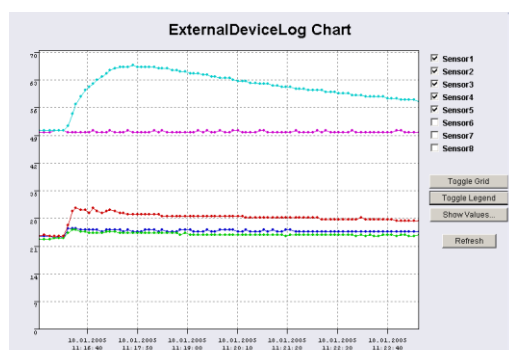
Display of the current measurement values and alarm thresholds

ACK = „Acknowledge“

Buttons for the acknowledgement of detected alarms

Push button for manual switching of digital output

- Integrated **BACS Battery Management System** with **BACS VIEWER** logfiles



## Technical Data

- 8 digital inputs (dry contacts, open / closed configurable)
- 8 analog inputs (0 - 10V, 4 - 20mA, 0 - 20mA configurable via jumpers) for all kinds of GENEREX environmental sensors and 3<sup>rd</sup> party sensors with such an interface.
- 8 relay outputs (changer, max. 230VAC/4A or 48VDC/1A)
- 2 x RJ10 for BACS battery bus for up to 330 batteries
- 10/ 100Mbit LAN
- Timer for scheduled output control, start-up settings for every output (on / off)
- RS-232 interface for other devices (e.g. UPS)
- Remote configuration via webbrowser
- Supported protocols:  
Email, HTTP, SNMP, SNT, RFC868, MODBUS  
Over IP, UPSTCP, DHCP, DNS, FTP, TELNET

- Battery backedup real-time clock
- LED alarm display, LED operating status display
- Non-volatile memory for alarms
- Integrated mail client and timeserver client

## Options

- UNMS II Network Management Software
- BACnet, PROFIBUS, LONBUS
- Smoke/fire alarms, motion detectors, door contacts etc., connection of any other alarm contact indicator, which output signal is between 0 - 10V, 4 -20mA or rather 0 - 20mA (configurable via jumpers)
- Actuators like flash light, alarm buzzer etc.

Predaj v SR: Rhea elektro s.r.o., Elektrárnská 1/12440, 831 04 Bratislava, tel.: + 421 2 49101914-18, info@rhea-elektro.sk